

1-070 Compression-Latch Pr20.1



HD compression latch with 5mm clamping grip for application outside sealed area.

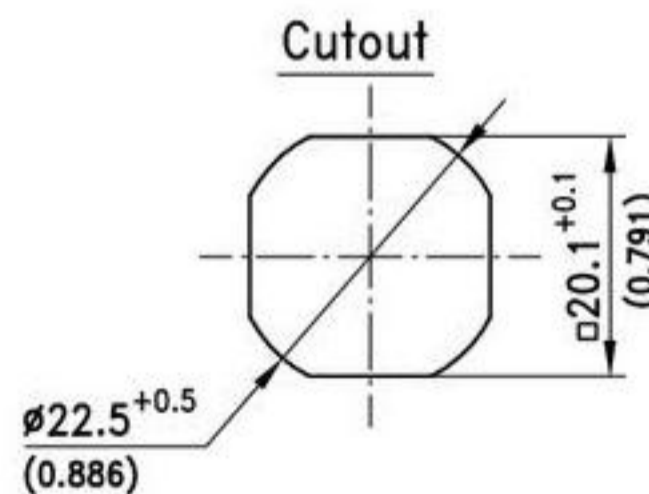
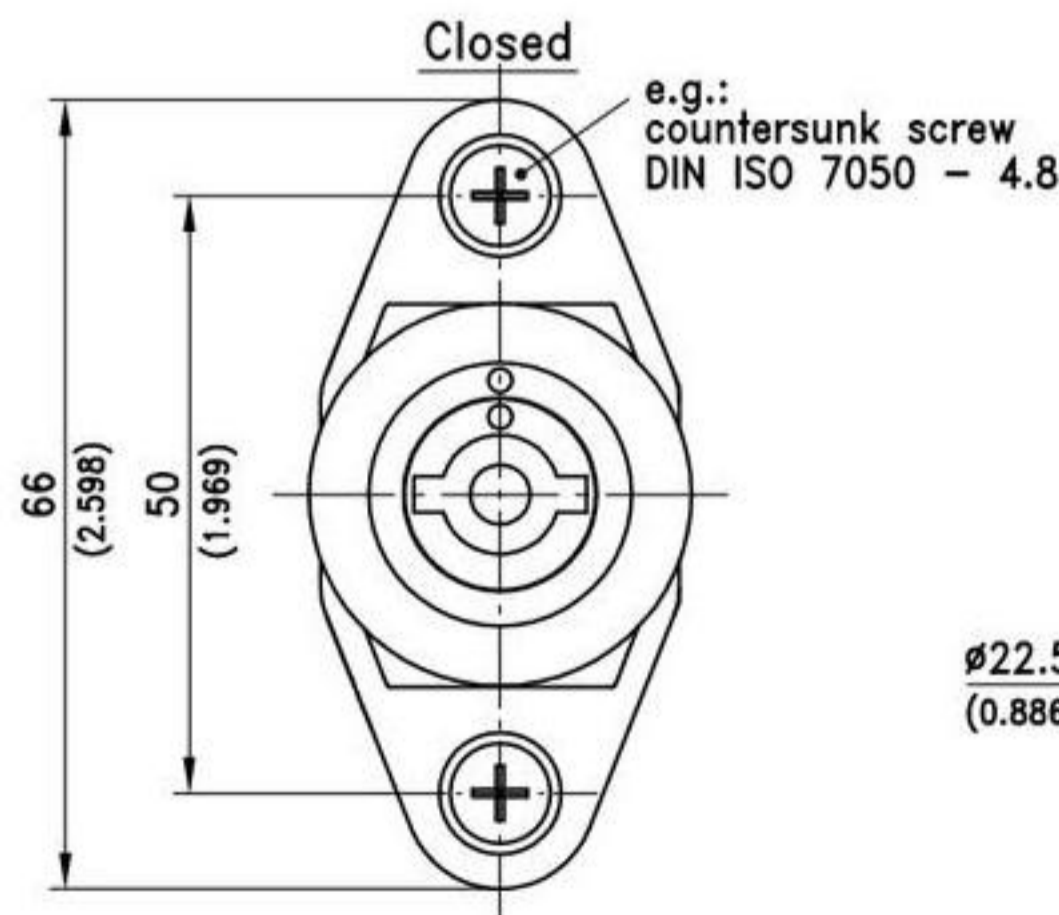
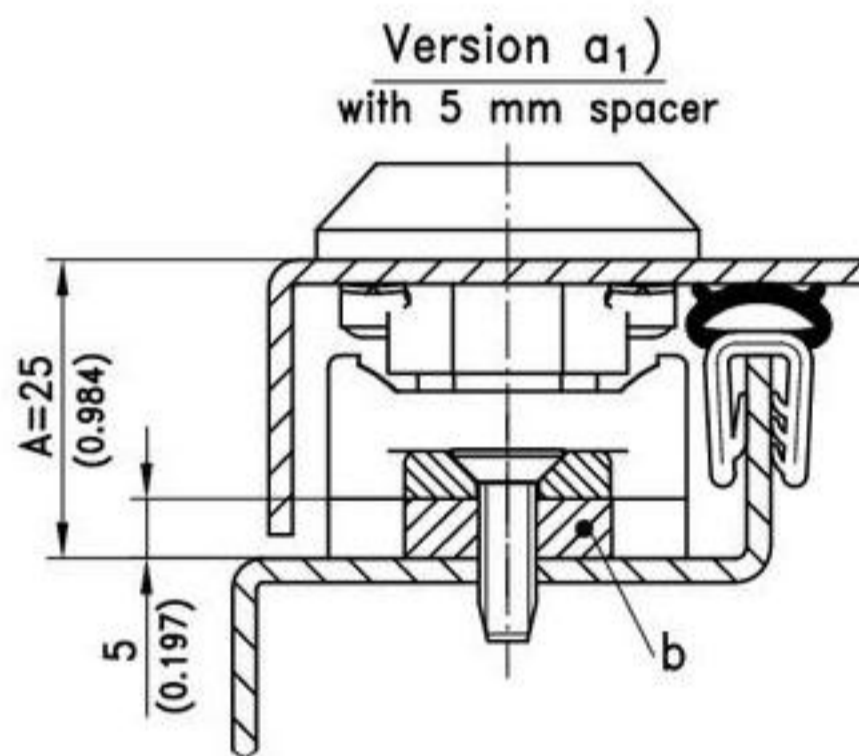
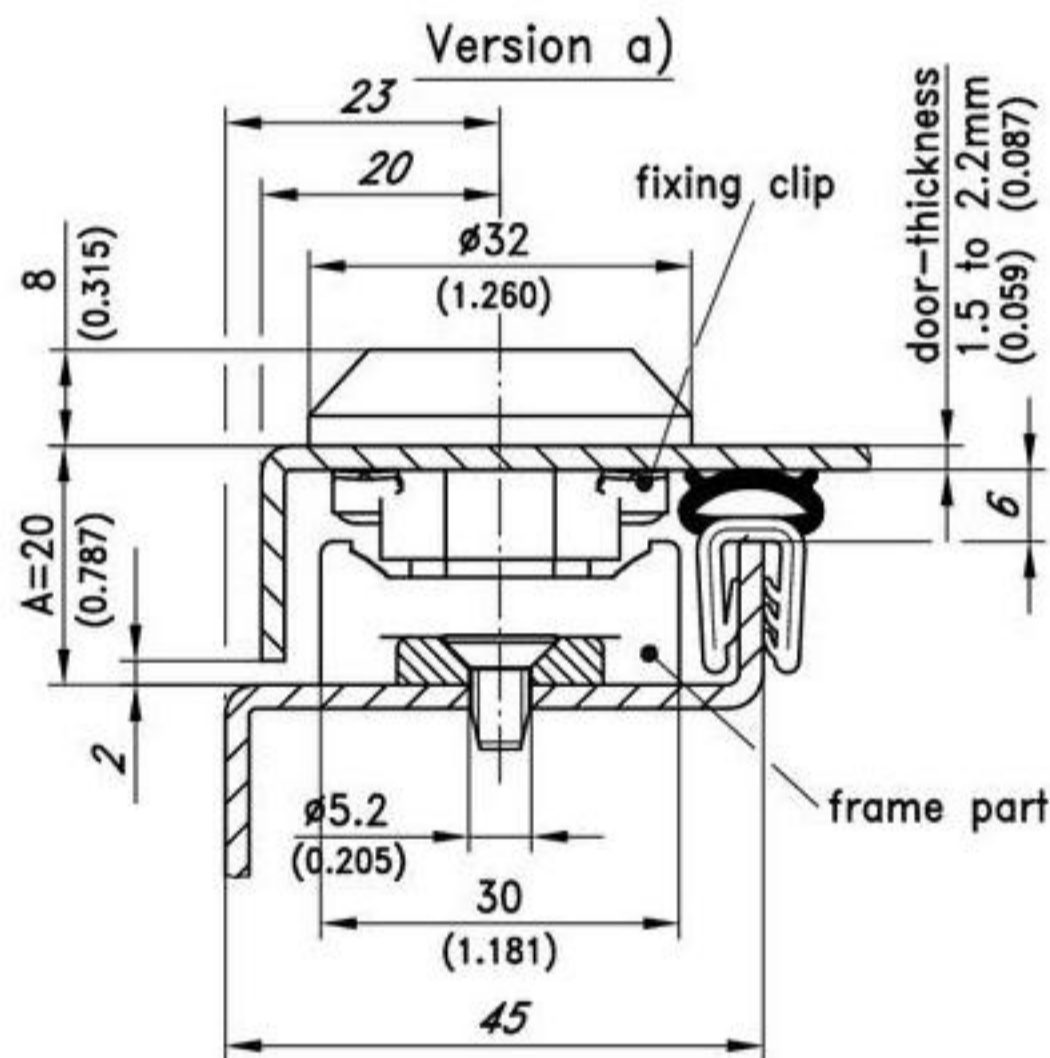
- RH or LH application, vibration-proof.
- The first 90° turn of the actuator brings in the cam in closed position and automatically aligns a sagging door (Seal not yet compressed.)
- This double function is especially beneficial for pressurized enclosures: after the first 90° opening turn, the pressure can escape because the door is still latched.
- A further 90° turn pulls the door tight by 4,5mm.
- Matching dots mark the final position (see lower drawing).

A further advantage:

- The double function is especially beneficial for pressurized enclosures: after the first 90° opening turn, the pressure can escape because the door is still latched.
- For increasing the A-dimension add 5mm spacer(s).

Material:

- a) and a1)
- **Housing, Insert, Cam, Frame part:** zinc die, black
- **Fixing clip:** spring steel, zinc plated
- b)
- **Spacer:** zinc die, black



Function



a) Compression latch complete with frame part and insert

Double bit 3 pin	291-9005
Double bit 5 pin	291-9001
Square 8mm	291-9002
Slotted 2x4 deep	291-9003
Triangular 8mm	291-9004

b) Spacer for increasing the A-dimension 5 mm

200-4804.34

1-070SL Mini Compression Latch SNAP-LINE



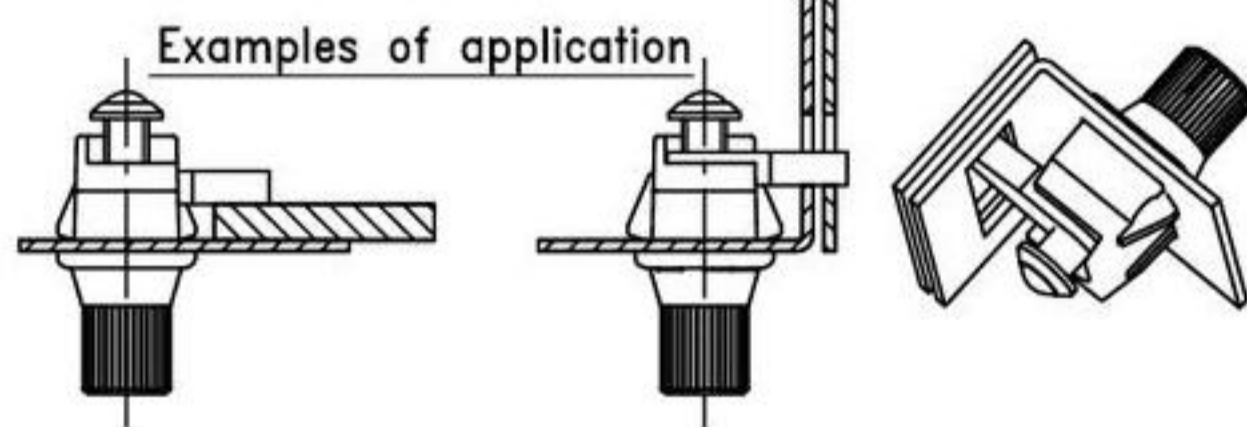
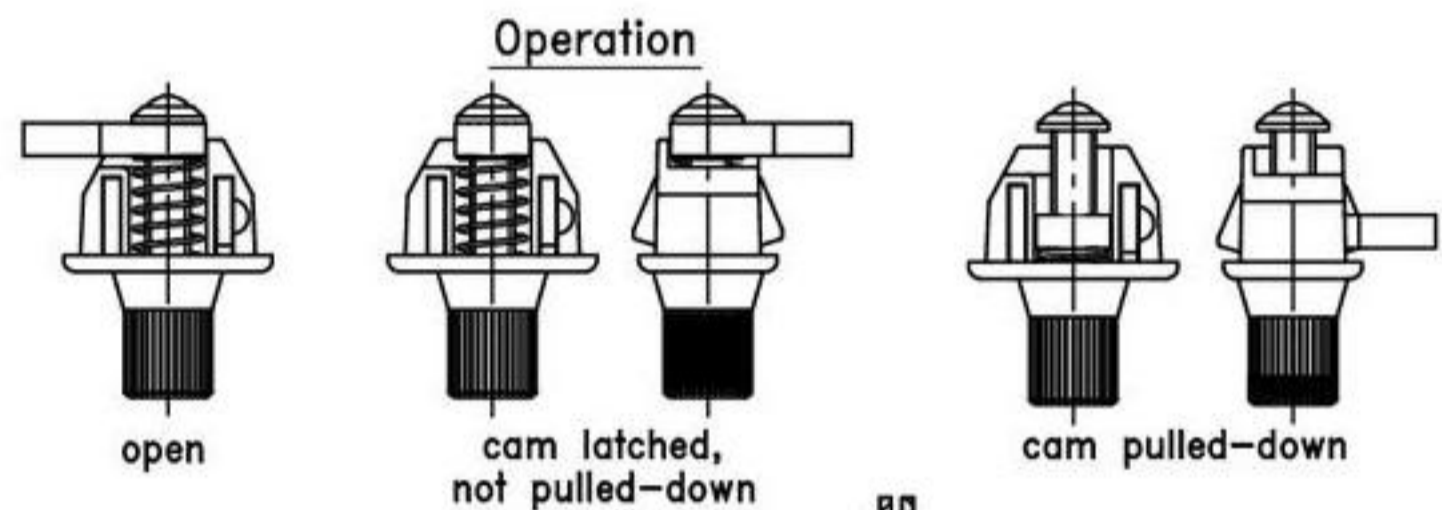
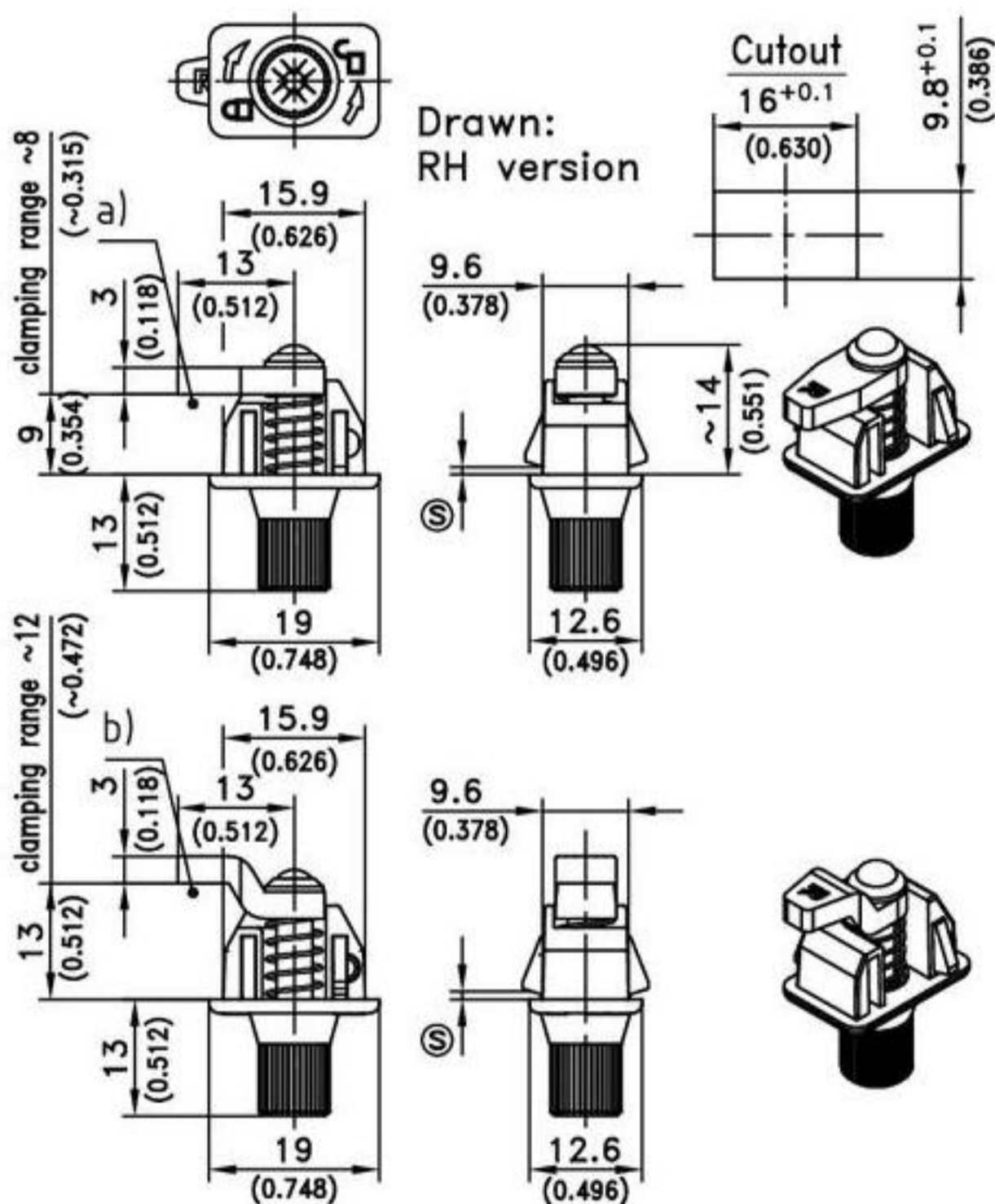
Mini compression latch with ~8mm clamping range. 2 versions: RH and LH

- The latching and compression operation for the RH version is clockwise, for the LH version counterclockwise.
- By turning the knob, the cam is put into the latched position. Once latched, a further turning of the knob makes the cam start its compression feature.
- The knob can also be controlled by a Phillips screwdriver.
- The direction of opening/closing is clearly marked on the housing.
- Once latched, the cam for the RH version points to the right and vice versa.

• Installation by a simple push into the cutout.

Material:

- **Housing:** zinc die, matt chrome plated.
- **Insert and washer:** steel, zinc plated
- **Spring:** stainless steel
- **Cam:** sintered steel, zinc plated
- **Snap wedges:** sintered steel, zinc plated



	clamping range Ⓢ	Version RH (as drawn)	Version LH
a) Mini Compression Latch	0,8 - 1,0	448-9001.00-00810	448-9002.00-00810
	1,1 - 1,3	448-9001.00-01113	448-9002.00-01113
	1,4 - 1,6	448-9001.00-01416	448-9002.00-01416
b) Mini Compression Latch with cranked cam	0,8 - 1,0	448-9015.00-00810	448-9016.00-00810
	1,1 - 1,3	448-9015.00-01113	448-9016.00-01113
	1,4 - 1,6	448-9015.00-01416	448-9016.00-01416

Other Ⓢ - dimension on request!