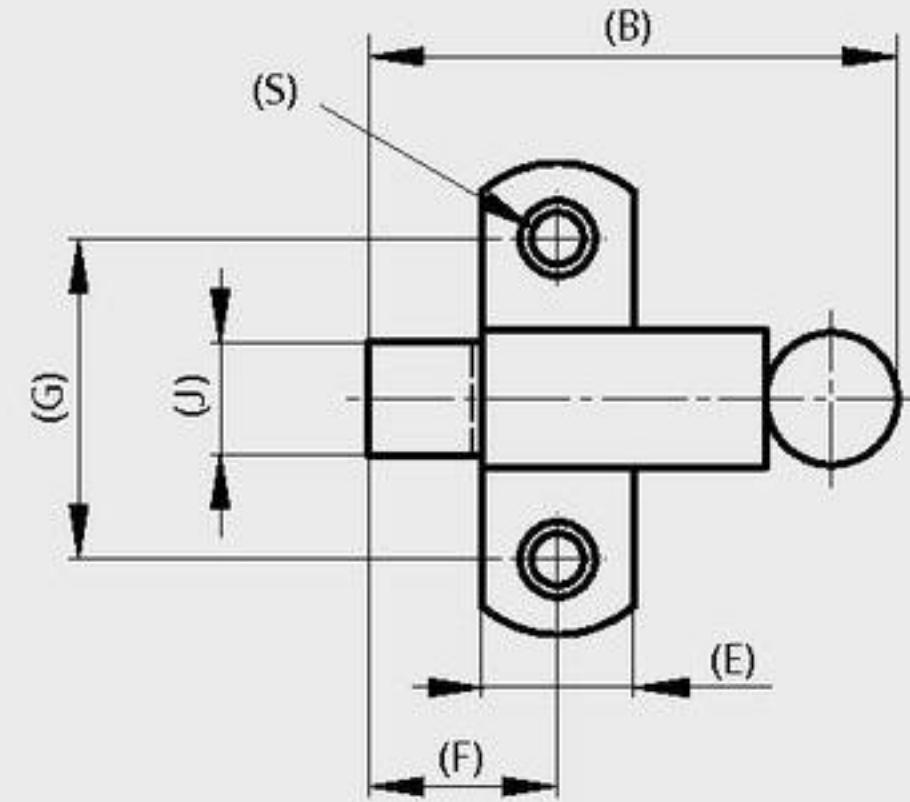
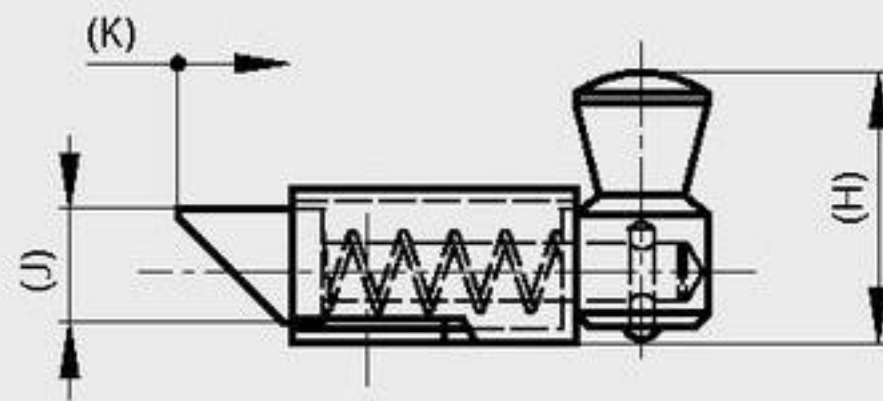
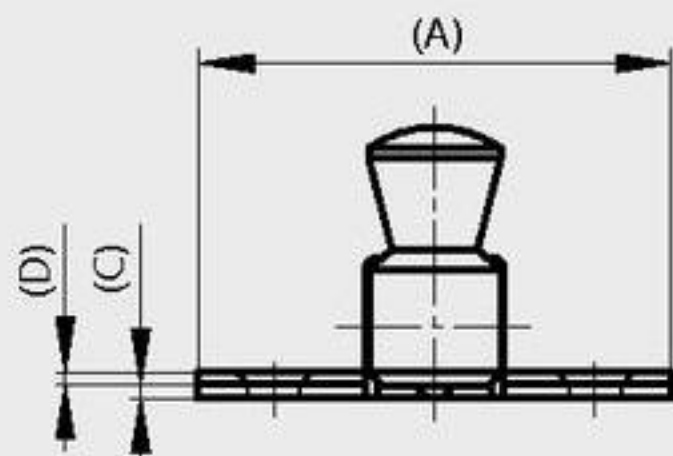


Springloaded latches

Slam latches.

A	B	C	D	E	F	G	H	J	K	S	part number	material	finish	weight
35	36.5	1.2	1	11	13.5	23	19	8	8	3.5	16-1-3625	steel	zinc plated	20g
35	36.5	1.2	1	11	13.5	23	19	8	8	3.5	16-1-3626	brass	chrome plated	24g
50	56	1.5	1.2	16	20	34	27	12	12	5.5	16-1-3628	steel	zinc plated	71g
50	56	1.5	1.2	16	20	34	27	12	12	5.5	16-1-3629	brass	chrome plated	75g
70	73	2	1.5	22	28	45	38	16	16	7	16-1-3631	steel	zinc plated	129g
70	73	2	1.5	22	28	45	38	16	16	7	16-1-3632	brass	chrome plated	163g



Flat strike for latches with dimension A = 35

A	B	S	part number	material	finish	weight
40	20	2.9	16-1-3641	steel	zinc plated	7.5g

