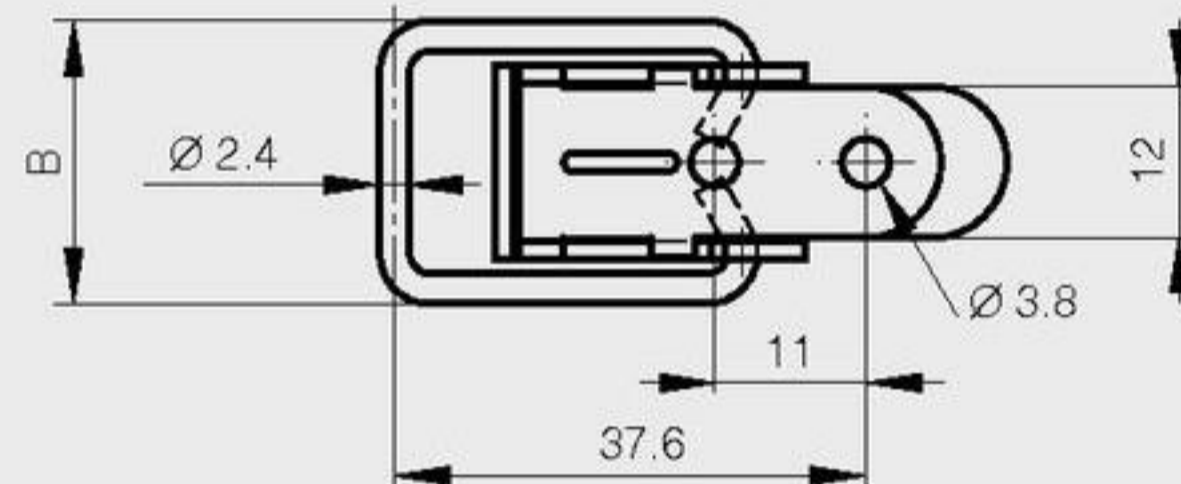
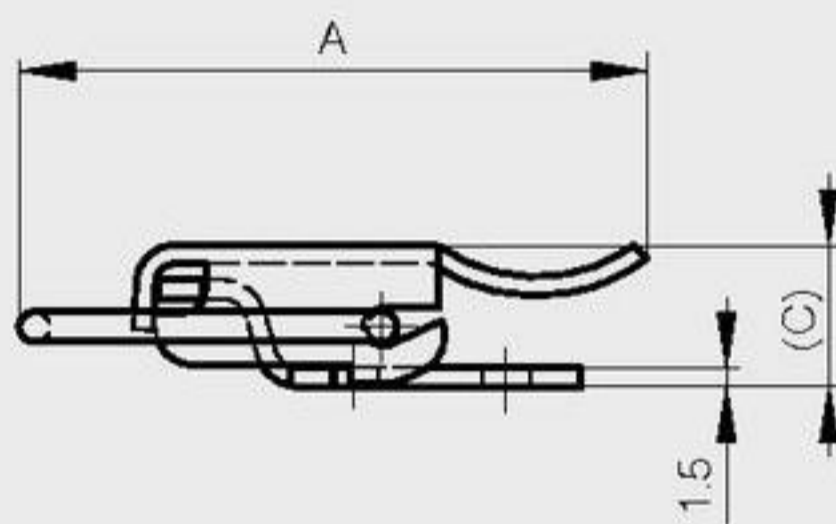


### Toggle latches without strike

These latches are used with strike part numbers 16-7-3414, 16-7-3418, 16-7-3529 and 16-7-3531 (see below)

Padlockable options available are part numbers 16-7-3394 and 16-7-3396

A	B	C	note	part number	material	finish	weight
50	22	12.5	undrilled	16-7-3416	steel	raw	20g
50	22	12.5	drilled	16-7-3410	steel	zinc plated	20g
50	22	12.5	drilled	16-7-3525	304 stainless steel	raw	20g
49	22.5	11.8	undrilled	16-7-3527	304 stainless steel	raw	20g



### Strikes for part numbers 16-7-3410, 16-7-3416, 16-7-3525 and 16-7-3527

A	B	C	D	E	note	part number	material	finish	weight
12.8	24	1.5			undrilled	16-7-3418	steel	raw	3.5g
12.8	24	1.5	14	5	drilled	16-7-3414	steel	zinc plated	3.5g
12.8	24	1.5	14	5	drilled	16-7-3529	304 stainless steel	raw	3.5g
12.8	24	1.5			undrilled	16-7-3531	304 stainless steel	raw	3.5g

