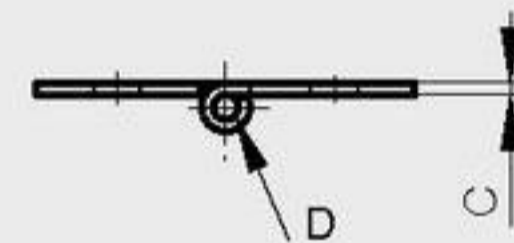
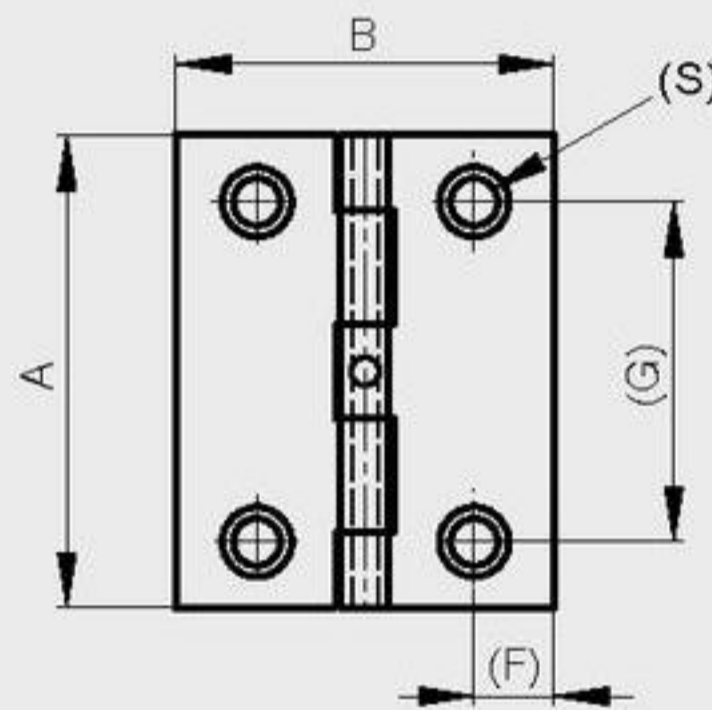
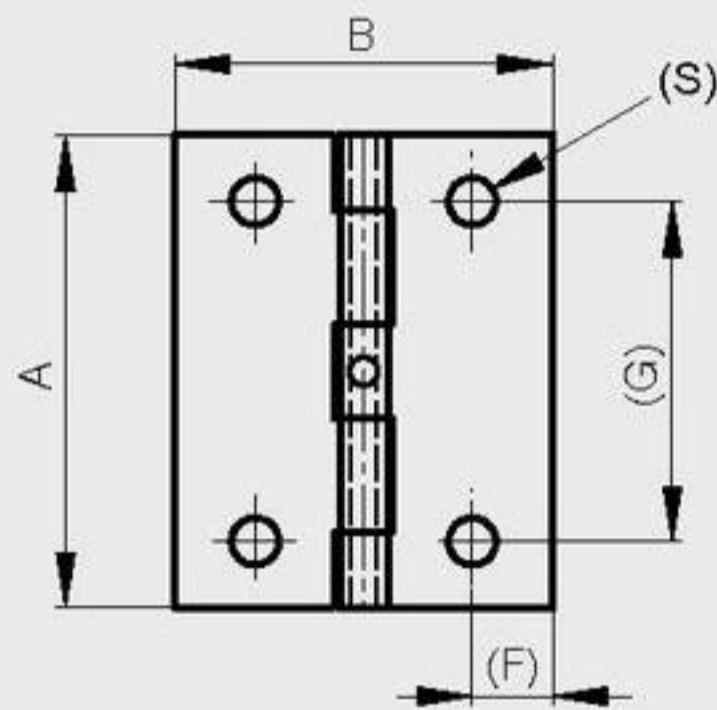


### 50 x 40 hinges

Available in 2 versions: with 4 x 5mm diameter holes (S) or 4 x 5mm countersunk holes (S)

A	B	C	D	F	G	S	note	part number	material	finish	weight
50	40	1.2	2.7	8.5	36	5	countersunk version	50-1-3526	steel	zinc plated	24g
50	40	1.2	2.7	8.5	36	5	drilled	50-1-3525	steel	zinc plated	24g
50	40	1.2	2.7	8.5	36	5	countersunk version	52-1-3592	304 stainless steel	raw	24g
50	40	1.2	2.7	8.5	36	5	drilled	52-1-3607	304 stainless steel	raw	24g



### 75 x 40 hinge

**new!**

A	B	C	D	E	F	G	part number	material	finish	weight
75	40	1.5	3	6	7.5	48	52-1-3990	304 stainless steel	raw	40g

