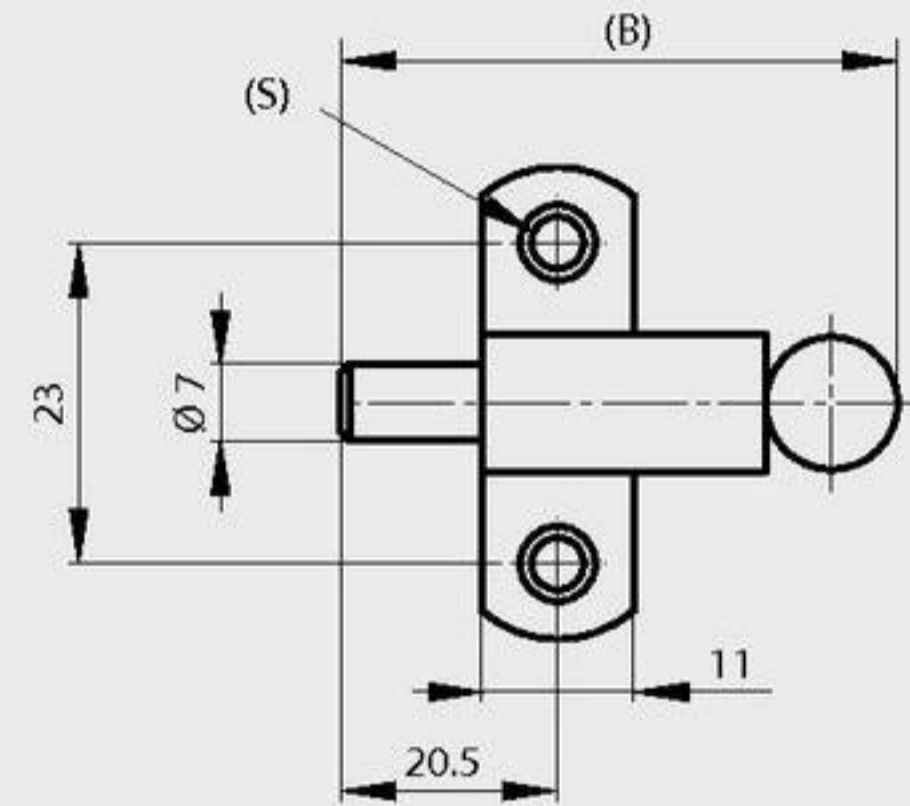
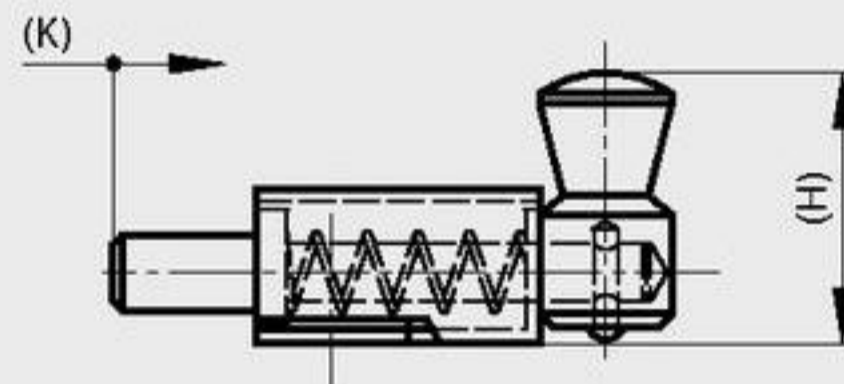
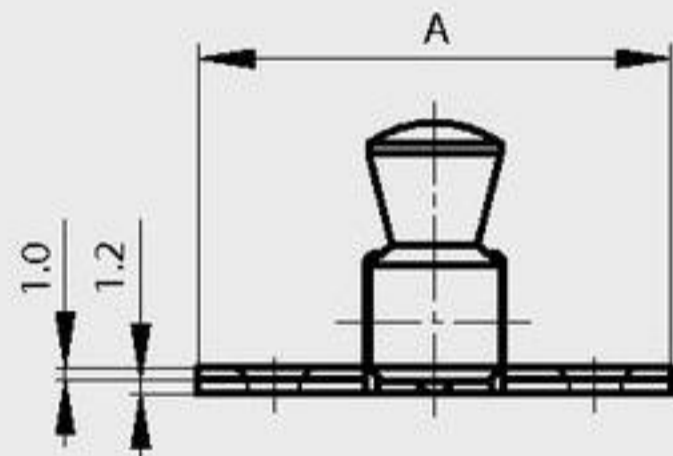


Springloaded latch with round bolt

A	B	H	K	S	part number	material	finish	weight
35	43.5	19	10	3.5	16-1-3647	steel	zinc plated	21g



Springloaded latches

Slam latches.

A	B	C	D	E	F	G	H	J	K	S	part number	material	finish	weight
35	36.5	1.2	1	11	13.5	23	19	8	8	3.5	16-1-3430	steel	zinc plated	20g
35	36.5	1.2	1	11	13.5	23	19	8	8	3.5	16-1-3431	brass	chrome plated	24g
50	56	1.5	1.2	16	20	34	27	12	12	5.5	16-1-3433	steel	zinc plated	71g
50	56	1.5	1.2	16	20	34	27	12	12	5.5	16-1-3434	brass	chrome plated	75g
70	73	2.0	1.5	22	28	45	38	16	16	7	16-1-3436	steel	zinc plated	129g
70	73	2.0	1.5	22	28	45	38	16	16	7	16-1-3437	brass	chrome plated	163g

