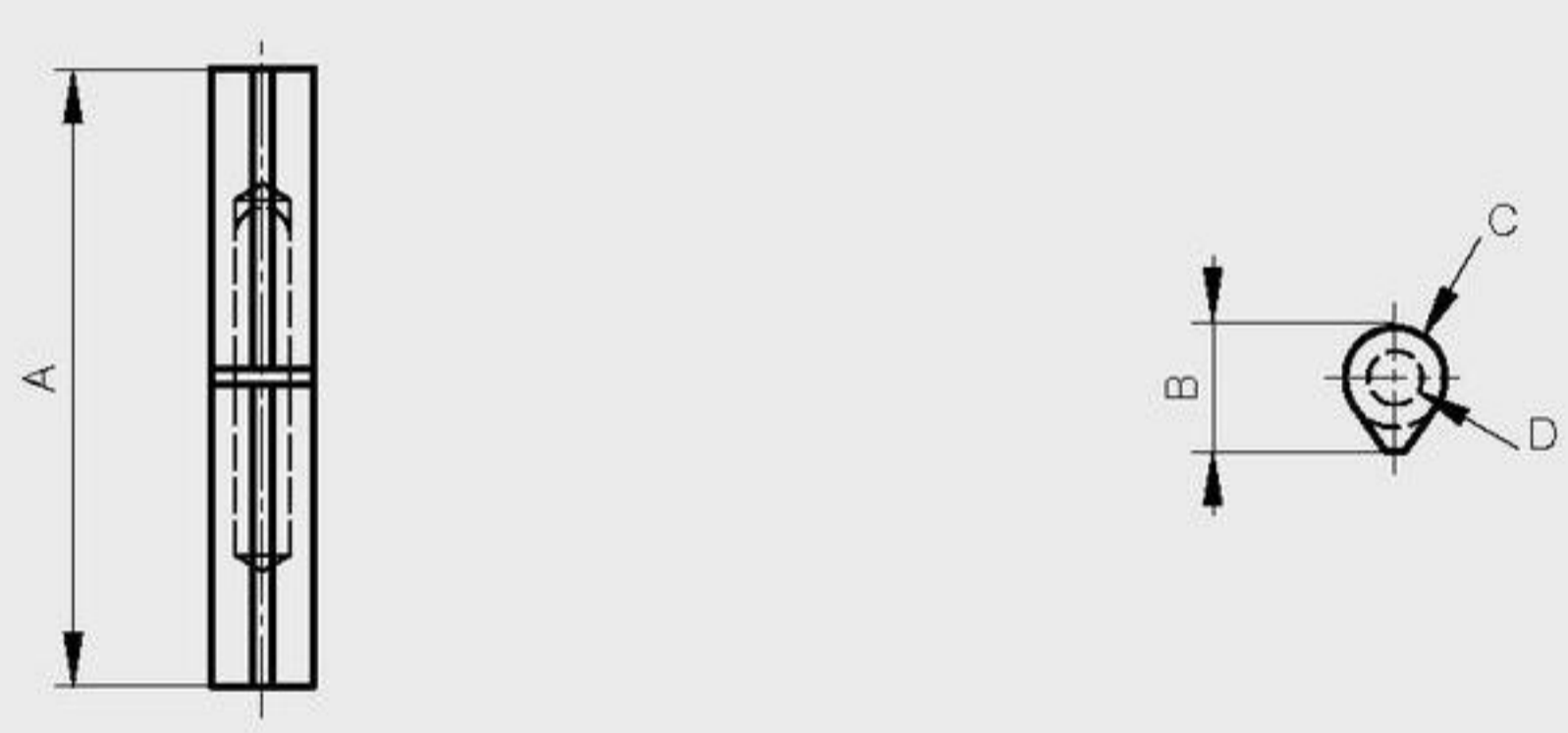


**Flat top weld-on steel hinges - brass washer**

Fixed pin

A	B	C	D	material	finish	part number	pin material	weight
45	10	8	5	steel	raw	14-7-3583	steel	20g
60	12	10	6	steel	raw	14-7-3569	steel	40g
80	16	13	7	steel	raw	14-7-3570	steel	90g
100	20	16	9	steel	raw	14-7-3571	steel	115g
120	20	16	9	steel	raw	14-7-3603	steel	135g
140	25.5	20	11	steel	raw	14-7-3572	steel	370g
200	29	23	16	steel	raw	14-7-3584	steel	600g
45	10	8	5	steel	raw	14-7-3597	brass	20g
60	12	10	6	steel	raw	14-7-3598	brass	40g
80	16	13	7	steel	raw	14-7-3599	brass	90g
100	20	16	9	steel	raw	14-7-3600	brass	115g
120	20	16	9	steel	raw	14-7-3604	brass	135g
140	25.5	20	11	steel	raw	14-7-3601	brass	370g
200	29	23	16	steel	raw	14-7-3602	brass	680g



**Flat top weld-on steel hinges - steel pin - ball bearing**

Fixed pin

A	B	C	D	part number	material	finish	weight
84	16	13	7	14-7-3613	steel	raw	92g
104	20	16	9	14-7-3614	steel	raw	117g
124	20	16	9	14-7-3615	steel	raw	137g
144.5	25.5	20	11	14-7-3606	steel	raw	372g
206	29	23	16	14-7-3616	steel	raw	682g

