



Buy on-line  
at the FA Parkes  
sales portal  
the quickest  
and most efficient  
way to purchase  
all your hardware  
requirements; locks  
handles, hinges  
stays, gasketting  
etc....

[www.faparkes.co.uk](http://www.faparkes.co.uk)  
your one stop shop!



Double-sided "FT"  
keys only

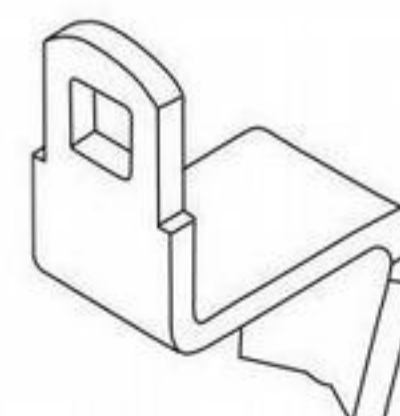
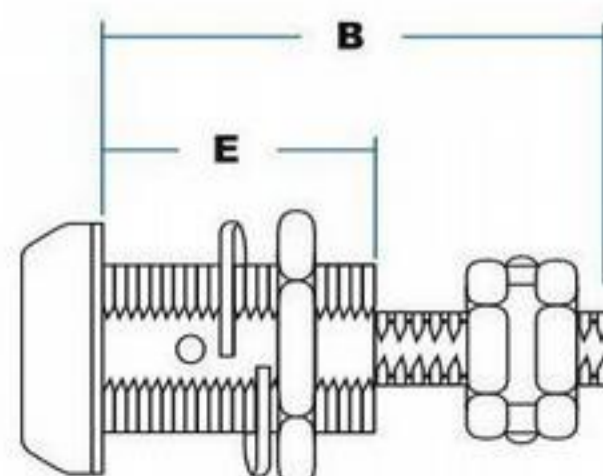
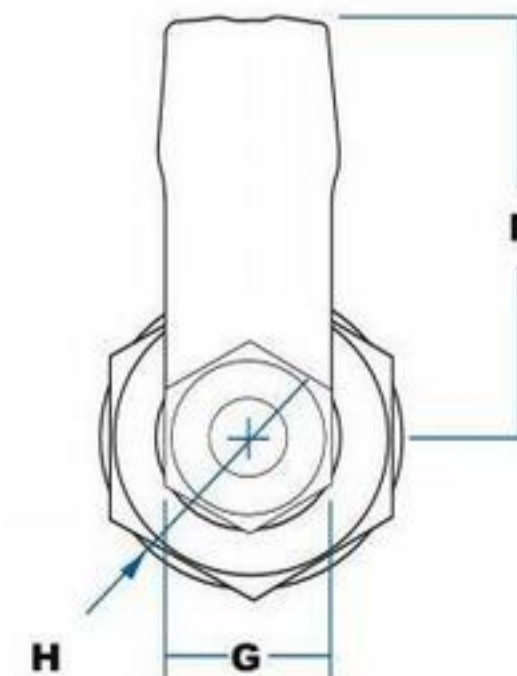
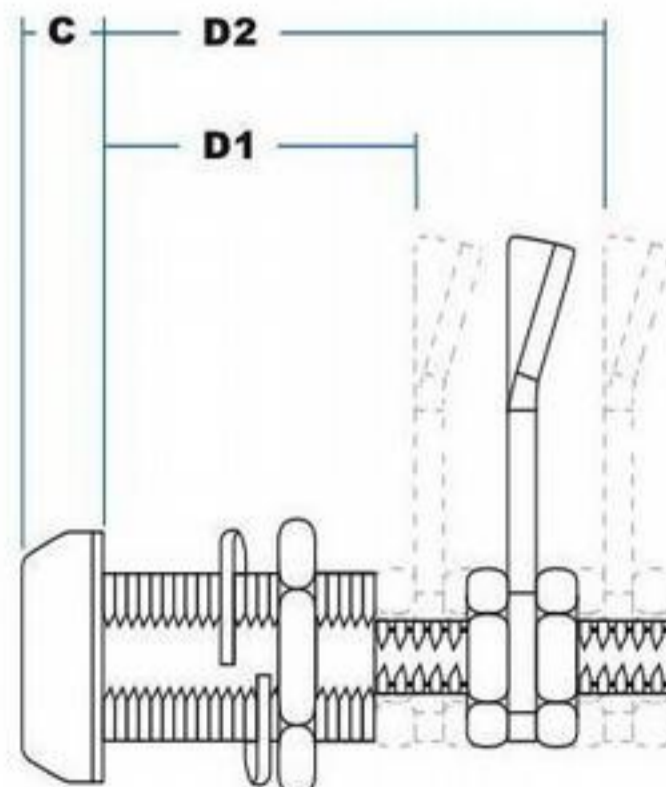
**9/02300**  
compression lock,  
with straight latch bar,  
shown in fully-extended  
'open' position

### ORDERING CODE

<b>9/02300</b>	Compression lock, chrome
<b>9/02300/01</b>	as above, FT111
<b>9/02300B</b>	Compression lock, black
<b>9/02300B/01</b>	as above, FT111

### SPECIFICATION

<b>A</b>	Head Diameter	29 mm
<b>B</b>	Total Depth (locked)	70 mm
<b>C</b>	Head projection	8 mm
<b>D1</b>	Depth to latch (min)	44 mm
<b>D2</b>	Depth to latch (max)	55 mm
<b>E</b>	Body depth	40 mm
<b>F</b>	Engagement	47.6 mm
<b>G</b>	Body across flats (square)	18.8 mm
<b>H</b>	Body diameter	22 mm
<b>I</b>	"Take-up" Depth	6 mm



Alternative latch bars  
allow dimension D1 to  
be reduced to 14mm -  
See Page A14 for  
options available.

F.A. Parkes (M.B.F) Limited  
Unit 4, Acorn Court  
Butts Street, Leigh  
Lancashire WN7 3AE

Tel. 01942 681 996  
[sales@faparkes.co.uk](mailto:sales@faparkes.co.uk)