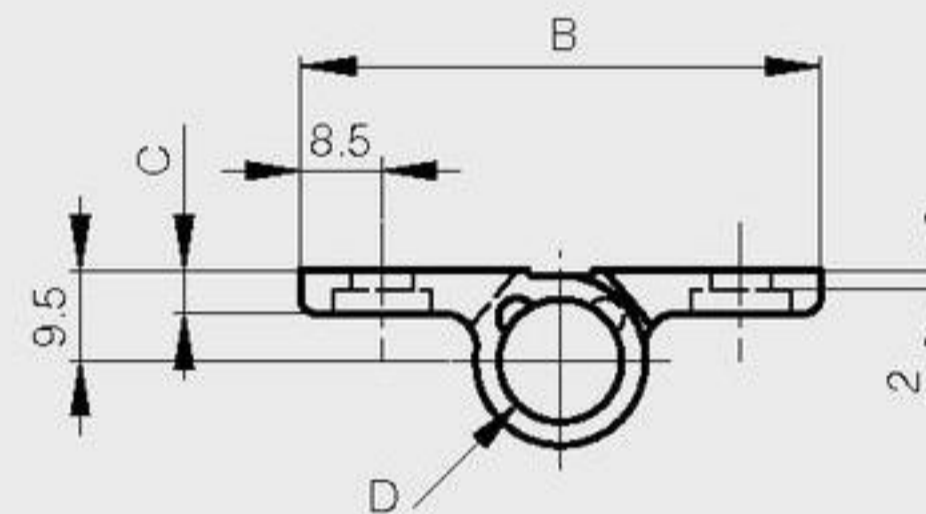
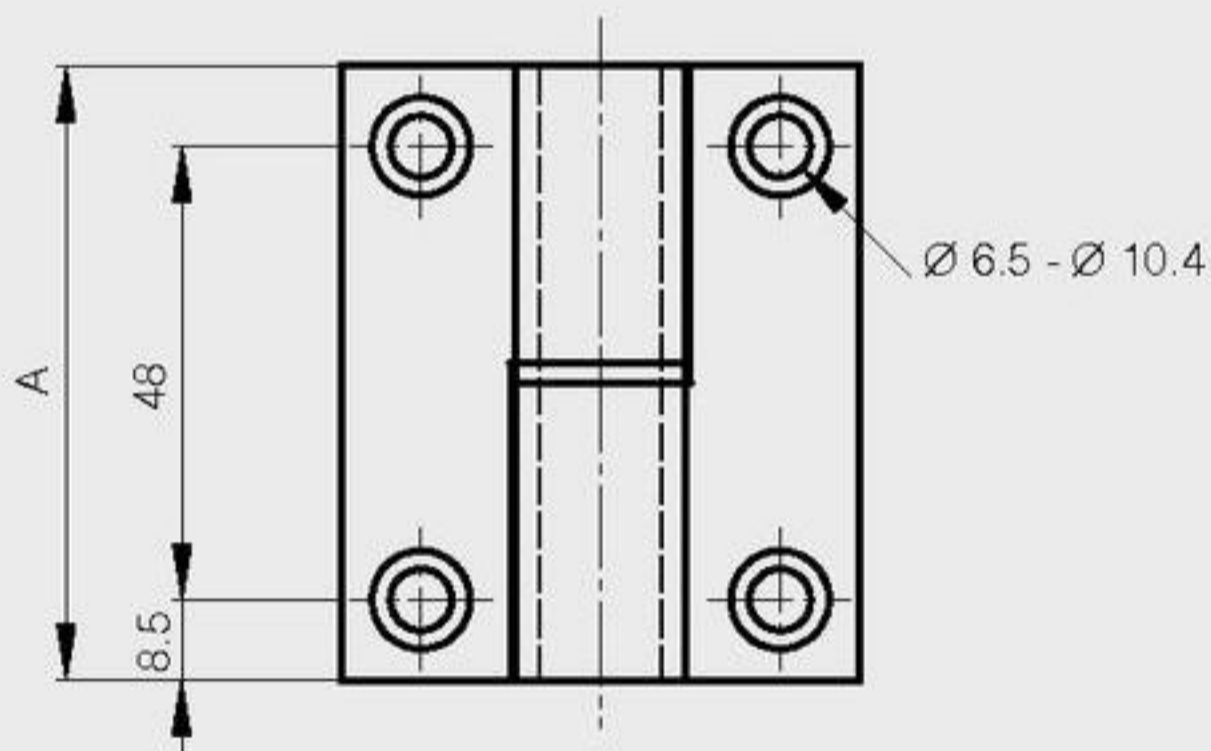


### Spring loaded lift-off hinges for light duty applications

This lift-off hinge returns to the original position when the opening angle is below 80°. When the opening angle is above 80°, the spring system has no effect and the hinge remains in position. A full product data sheet is available on our website. Fixing with M6 screws.



A	B	C	D	note	part number	material	finish	weight
65	55	4.5	13	type 2 as shown below	14-1-3759	alu 6060 T5	deburred	62g
65	55	4.5	13	type 1 symmetric not shown	14-1-3760	alu 6060 T5	deburred	62g
65	55	4.5	13	type 2 as shown below	14-1-3765	alu 6060 T5	black anodised	62g
65	55	4.5	13	type 1 symmetric not shown	14-1-3766	alu 6060 T5	black anodised	62g



### Spring hinges

Opening spring force in N.m :  
 $M(0^\circ) : 0,09 \text{ N.m} / M(90^\circ) : 0,07 \text{ N.m} / M(180^\circ) : 0,045 \text{ N.m}$

Closing spring force in N.m :  
 $M(0^\circ) : 0,045 \text{ N.m} / M(90^\circ) : 0,07 \text{ N.m} / M(180^\circ) : 0,09 \text{ N.m}$



A	B	C	D	F	G	S	note	part number	material	finish	weight
60	35	1	3	7.5	35	5	steel opening spring	71-1-3306	steel	raw	22g
60	35	1	3	7.5	35	5	stainless steel opening spring	71-1-3579	steel	raw	22g
60	35	1	3	7.5	35	5	stainless steel closing spring	71-1-3617	steel	raw	22g

