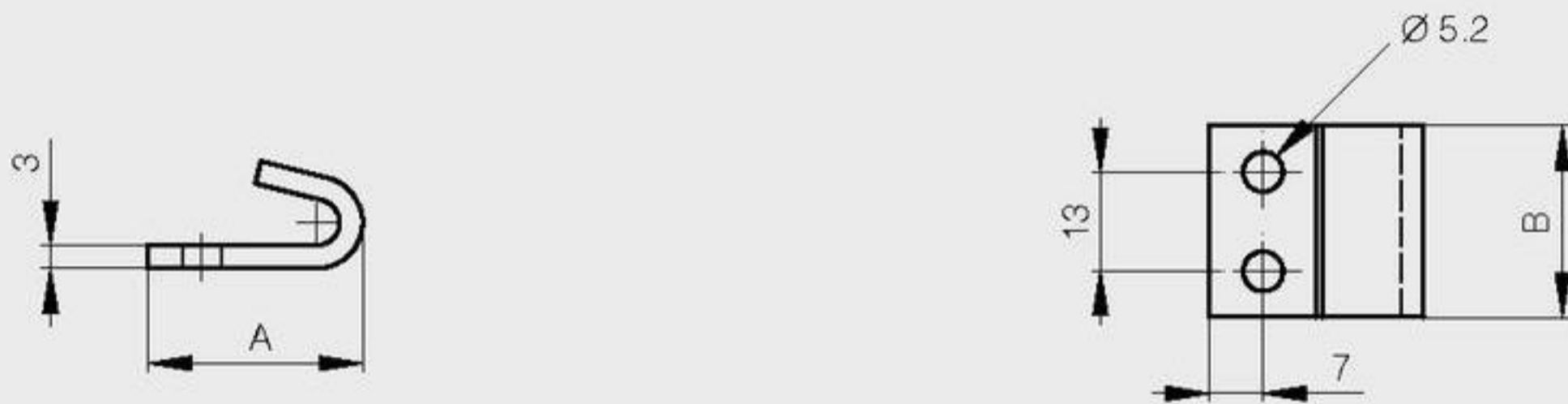


**Strikes for part numbers 16-7-3424, 16-7-3502, 16-7-3508 and 16-7-3829**

A	B	part number	material	finish	weight
28	25	16-7-3557	steel	raw	24g
28	25	16-7-3551	steel	zinc plated	24g
28	25	16-7-3601	304 stainless steel	raw	24g



**Other strikes available for part numbers 16-7-3424, 16-7-3502, 16-7-3508 and 16-7-3829**

Drilled and countersunk for 4.5 mm diameter screws

A	B	part number	material	finish	weight
85	25	16-7-3404	steel	raw	57g
85	25	16-7-3406	steel	zinc plated	57g
85	25	16-7-3828	304 stainless steel	raw	57g

