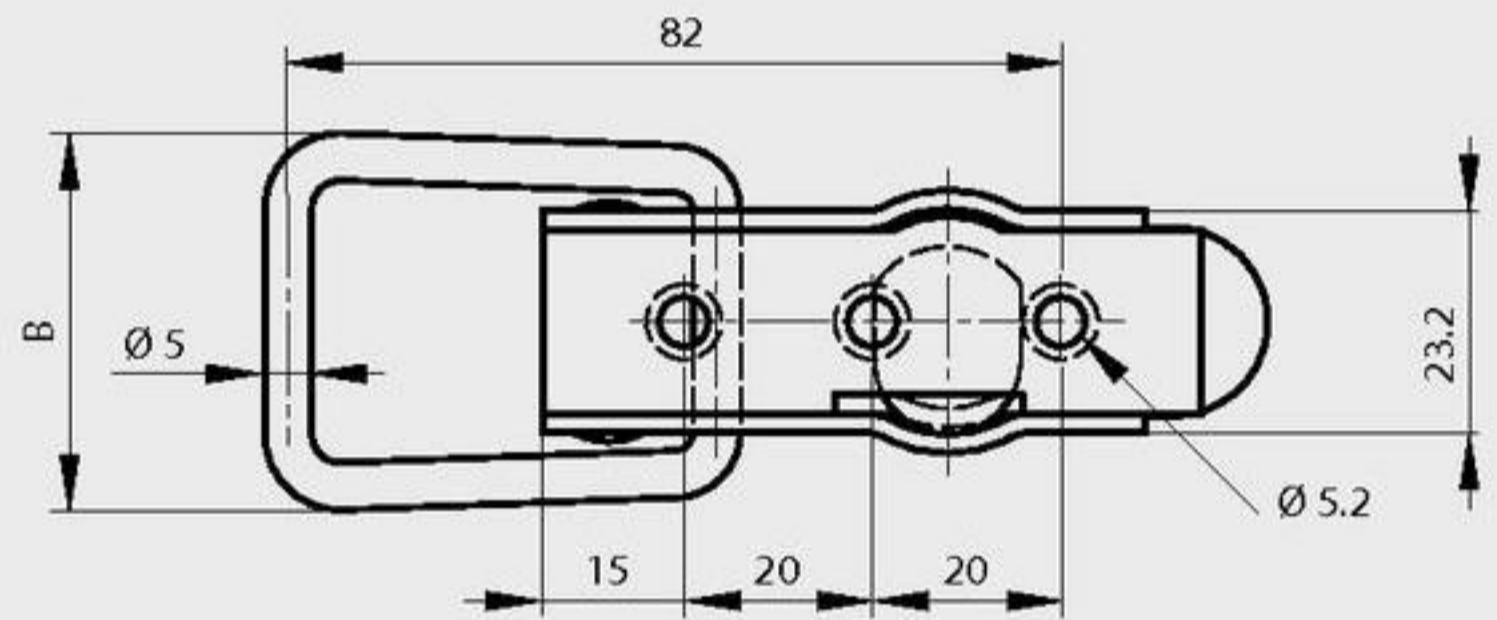
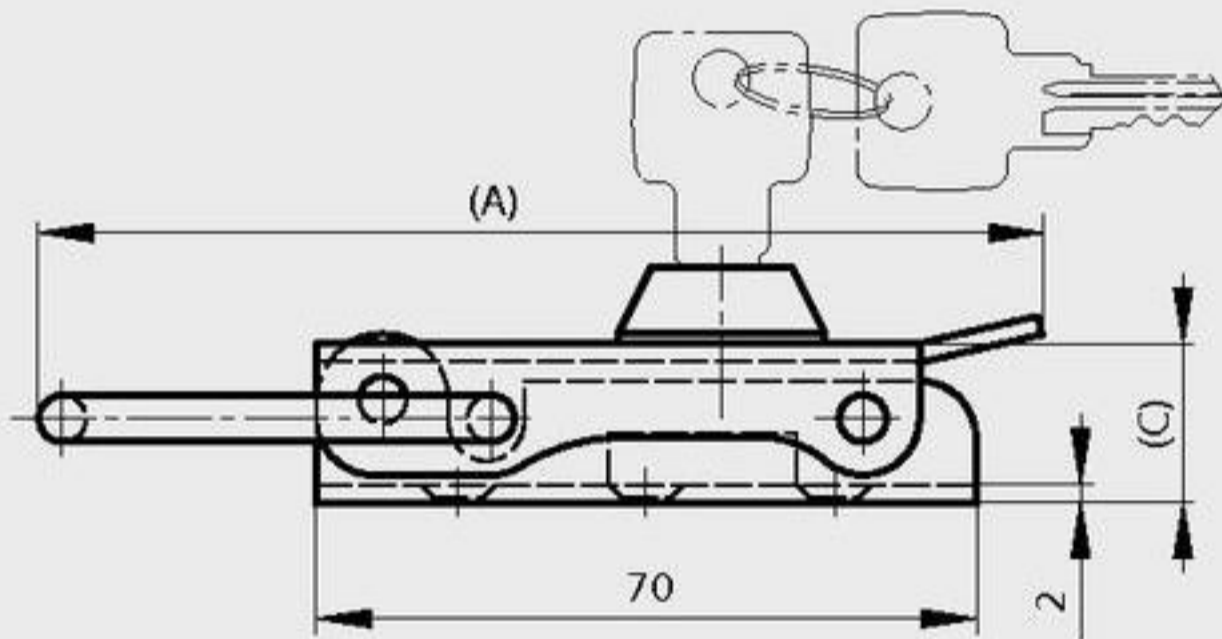


Lockable toggle latch without strike

Complete with 2 keys.
 Stainless steel shaft and zinc plated loop.
 This latch is used with strike part number 16-7-3551 (see below)



A	B	C	part number	material	finish	weight
106.5	40	17	16-1-4050	steel	zinc plated	132g



Strike for part number 16-1-4050

Possible alternative strikes: 16-1-4038, 16-7-3406 and 16-7-3870.

A	B	part number	material	finish	weight
28	25	16-7-3551	steel	zinc plated	24g

