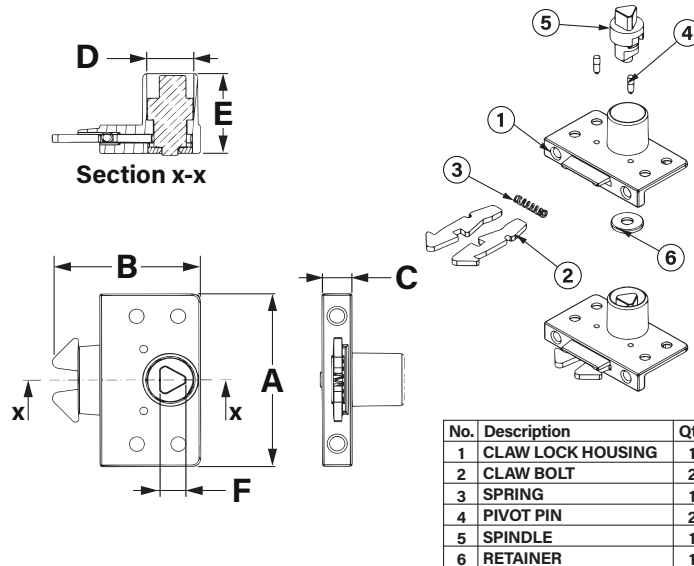
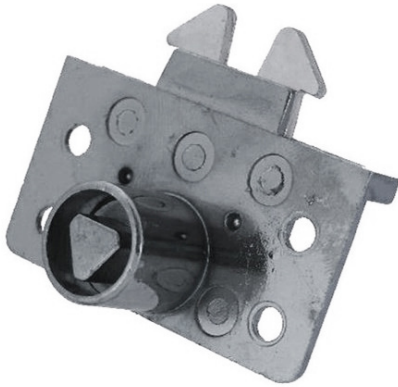


## Claw Lock Assembly



Claw Lock Assembly in zinc with 8mm tri key lock.

Slam-lock shut design.

Suitable applications include public bins, enclosures, lockers, metal and wooden office furniture, postal and medical furniture.

- Zinc die cast
- Claw material: mild steel, zinc plated
- Non-handed application

Part No.	A	B	C	D	E	F
23757	53.9	43.4	8.85	14	24.65	7.9

All dimensions shown in mm unless otherwise stated. We reserve the right to alter specifications without notice.



Thousands of products available to buy online



Reliable international delivery service



The UK's leading stockist of locks, handles, hinges gas springs & accessories

Order online at  
[www.faparkes.co.uk](http://www.faparkes.co.uk)

Your *One-Stop-Shop* for all your hardware requirements!



FA Parkes Ltd  
Unit 4, Acorn Court  
Butts Street,  
Leigh  
Lancashire, UK  
WN7 3AE



+44 (0) 1942 681 996



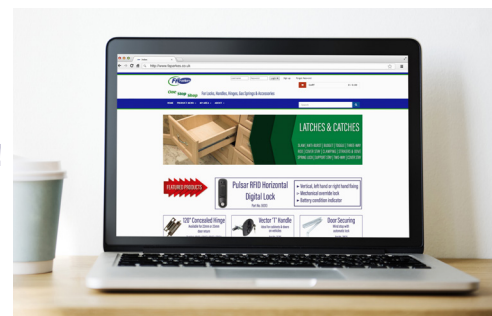
+44 (0) 1942 681 997



[www.faparkes.co.uk](http://www.faparkes.co.uk)



[sales@faparkes.co.uk](mailto:sales@faparkes.co.uk)



- Search by keyword or part number
- Browse by part type
- Product datasheet downloads
- No sign up required!

