



Buy on-line
at the FA Parkes
sales portal
the quickest
and most efficient
way to purchase
all your hardware
requirements; locks
handles, hinges
stays, gasketing
etc....

www.faparkes.co.uk
your one stop shop!

'FT' Keys
Optional



9/00450
with Slam-Bolt



Single-sided 'FS'
keys as standard

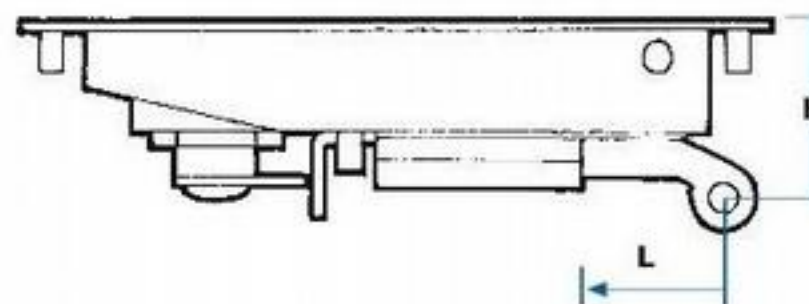


Slam-Bolt model with
interior release knob

ORDERING CODE

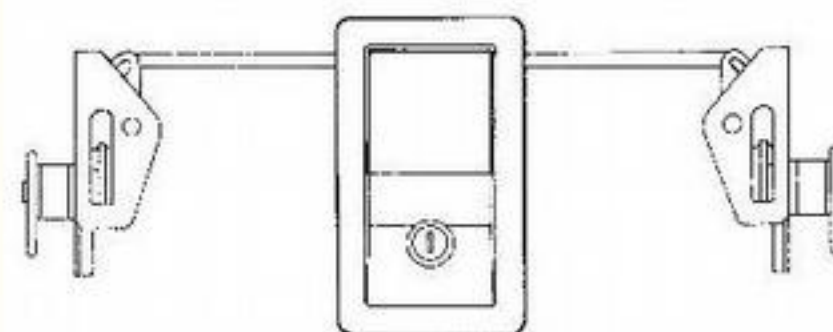
9/00450	Diecast paddle, black, slam-bolt
9/00450/01	As above, FS 880
9/00453	Diecast paddle, black, remote operation
9/00453/01	As above, FS 880
9/00457	Diecast paddle, black, 2-way
9/00457/01	As above, FS 880

Remote operation model (Illustration)



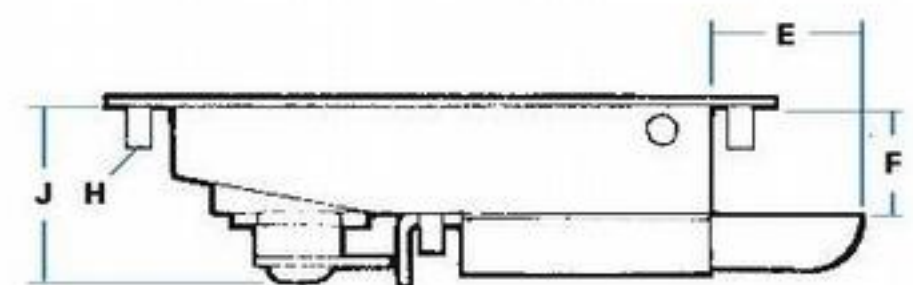
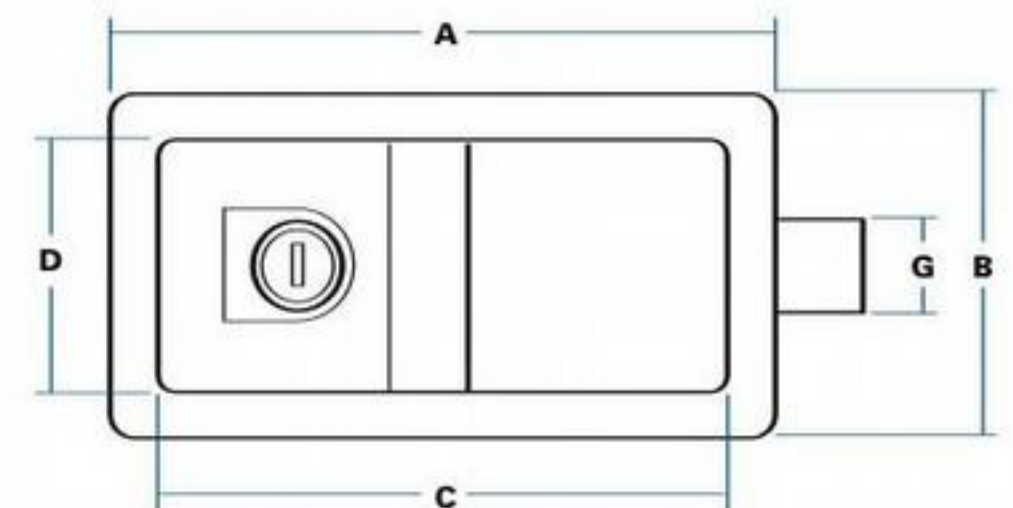
K Depth to link point	36 mm
L Travel (horizontal)	10 mm

2-way operation model



Scheme shows 'paddle' vertical, with two 'claw' latches. Alternatively two slam latches can be fitted, using standard linkage bar (3/12497) at length 915 mm (cut to size). Movement is 13 mm approx., at each side.

SPECIFICATION



A Case length	136 mm
B Case width	82 mm
C Hole centres	120 mm
D Hole centres	66 mm
E Bolt projection	28 mm
F Bolt depth	20 mm
G Bolt width	19 mm
H Holes tapped	10-32 UNF x 8 mm
J Maximum depth	35 mm

Slam bolt withdraws by 10 mm, max.

F.A. Parkes (M.B.F) Limited
Unit 4, Acorn Court
Butts Street, Leigh
Lancashire WN7 3AE

Tel. 01942 681 996
sales@faparkes.co.uk