



Buy on-line
at the FA Parkes
sales portal
the quickest
and most efficient
way to purchase
all your hardware
requirements; locks
handles, hinges
stays, gasketing
etc....
www.faparkes.co.uk
your one stop shop!

ORDERING CODE

3/18238 3-way rod latch, RH, (set)

3/18254 3-way rod latch, LH, (set)

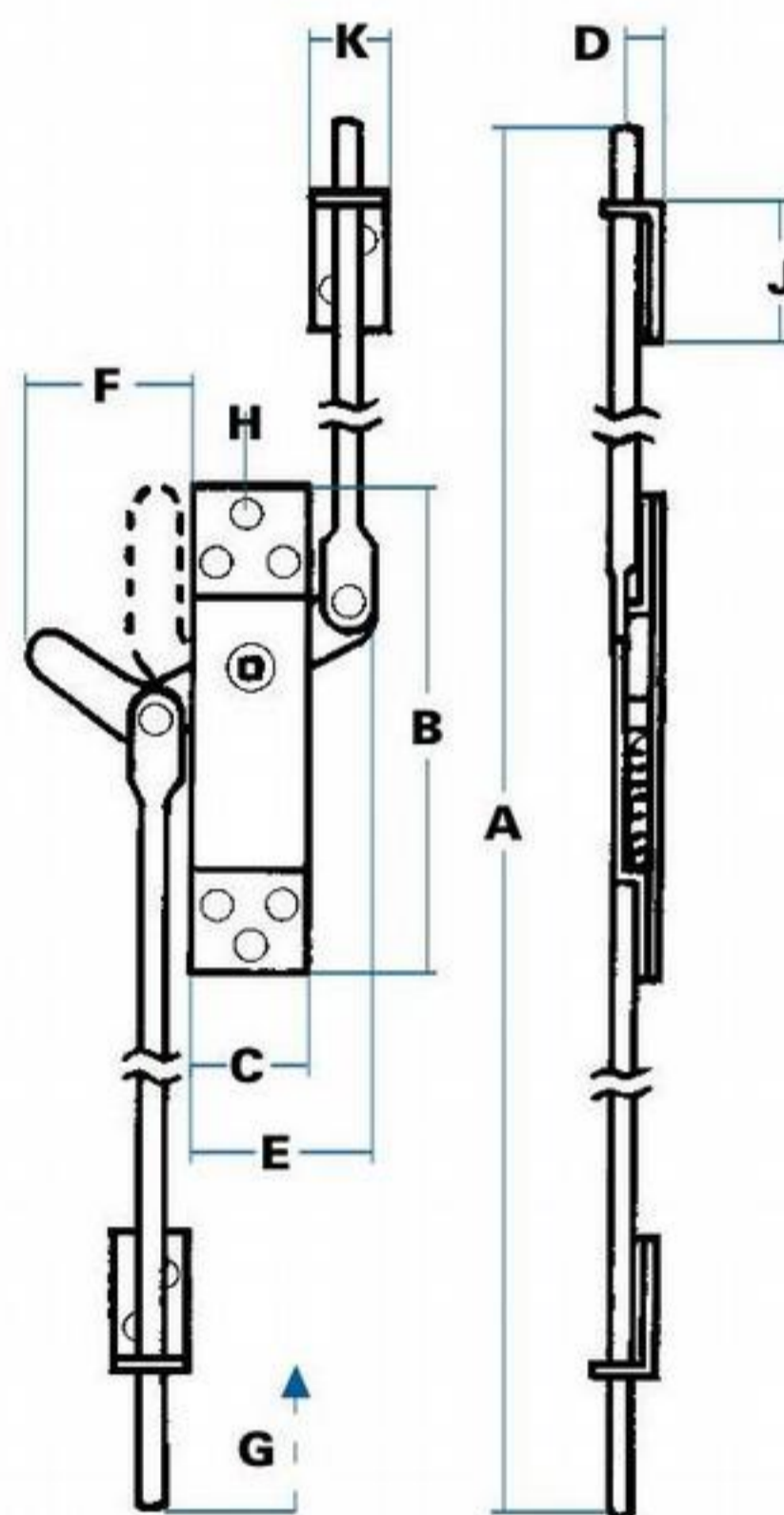
3/18238 MO 3-way latch RH,
no guides/keepers

3/18254 MO 3-way latch LH,
no guides/keepers

3/18702 Rod only, 1145 mm length

3/18716 Guide, 3-way latches

3/18722 'Keeper', 3-way latches



SPECIFICATION

A. Length of system (extended)	2264 mm
(retracted)	2230 mm
B. Case length	145 mm
C. Case width	36 mm
D. Height to rod centre	15 mm
E. Rear projection	57 mm
F. Front projection (extended)	54 mm
(retracted)	21 mm
G. Withdrawal (each end)	33 mm
H. Hole sizes (diameter) 6 mm, c/s 9 mm	
J. Guide plate length	40 mm
K. Guide width	25 mm

'Keeper' dimensions 120 x 25 mm, maximum height 12 mm, hole centres 101 mm
Centre 'tongue' & guide thickness, 4 mm
Rod dimensions : 10 mm dia. x 1145 mm length.



**Left-hand rod latch 3/18254
(includes guides & keeper plate)
shown fully extended, from inside.**

F.A. Parkes (M.B.F) Limited
Unit 4, Acorn Court
Butts Street, Leigh
Lancashire WN7 3AE

Tel. 01942 681 996
sales@faparkes.co.uk