



Buy on-line
at the FA Parkes
sales portal
the quickest
and most efficient
way to purchase
all your hardware
requirements; locks
handles, hinges
stays, gasketing
etc....

www.faparkes.co.uk
your one stop shop!



1/27296
Small cam



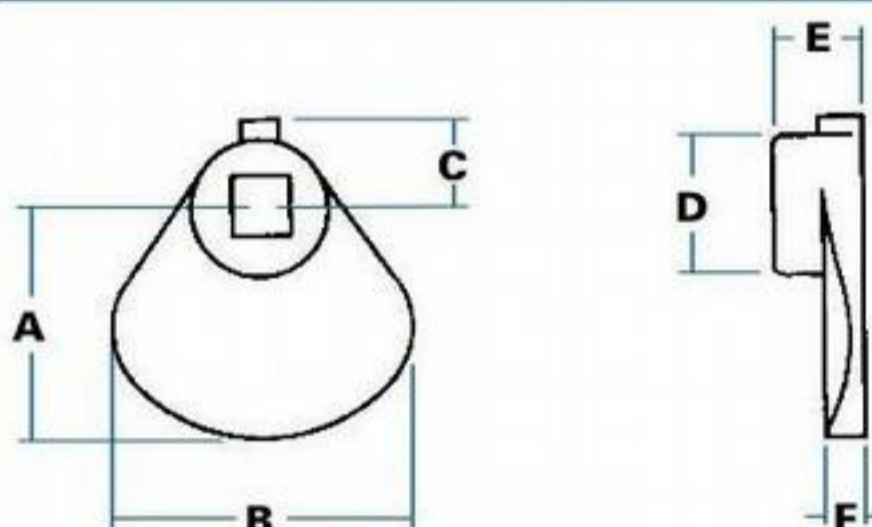
9/00837
Large cam

ORDERING CODE

1/27296 Small cam, 8 mm square hole

1/27297 Small cam, M8 threaded hole

9/00837 Large cam, 8 mm square hole

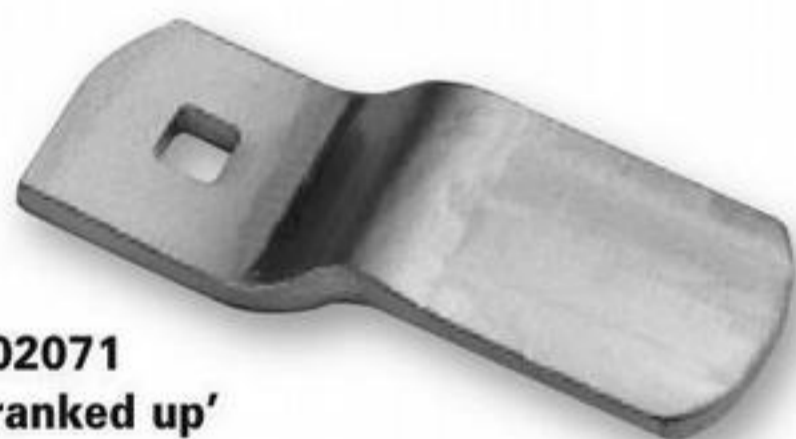


SPECIFICATION

A	Length (small cam)	32 mm
A1	Length (large cam)	63 mm
B	Width	40 mm
C	Location	11 mm
D	Diameter	19 mm
E	Height	13 mm
F	Cam-form	4 mm

All cams are fitted with hexagon-head grub screw, adjusted by 3/32" Allen key (threaded 10/32 UNF x 3/8")

Heavy-duty latch bars, made in rolled-edge mild steel, 30 mm width x 5 mm deep, with 3 mm 'V' raise for cam-action.



5/02071
'cranked up'



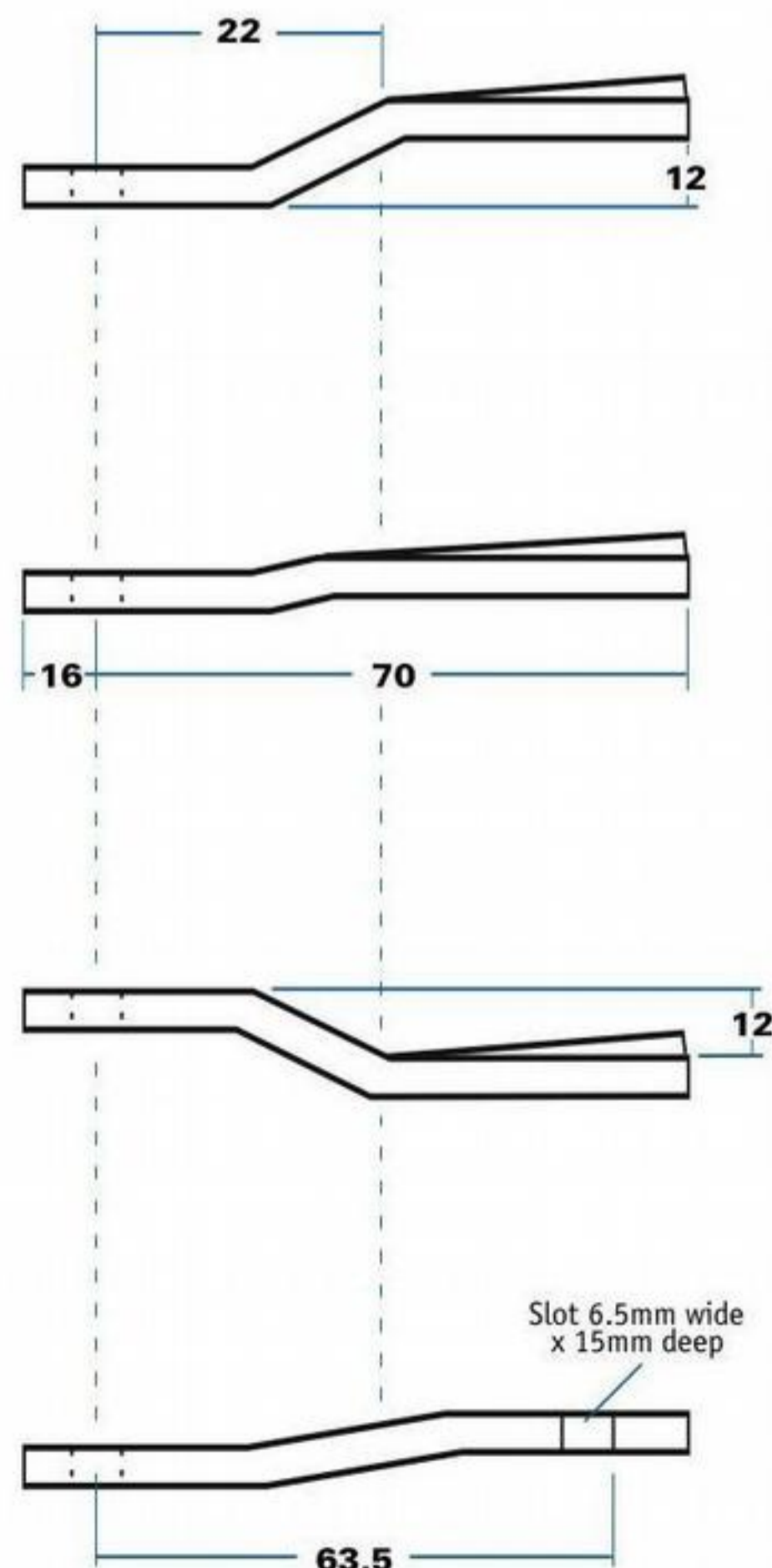
5/02069
'straight'



5/02067
'cranked down'



5/02059
'hooked'



F.A. Parkes (M.B.F) Limited
Unit 4, Acorn Court
Butts Street, Leigh
Lancashire WN7 3AE

Tel. 01942 681 996
sales@faparkes.co.uk