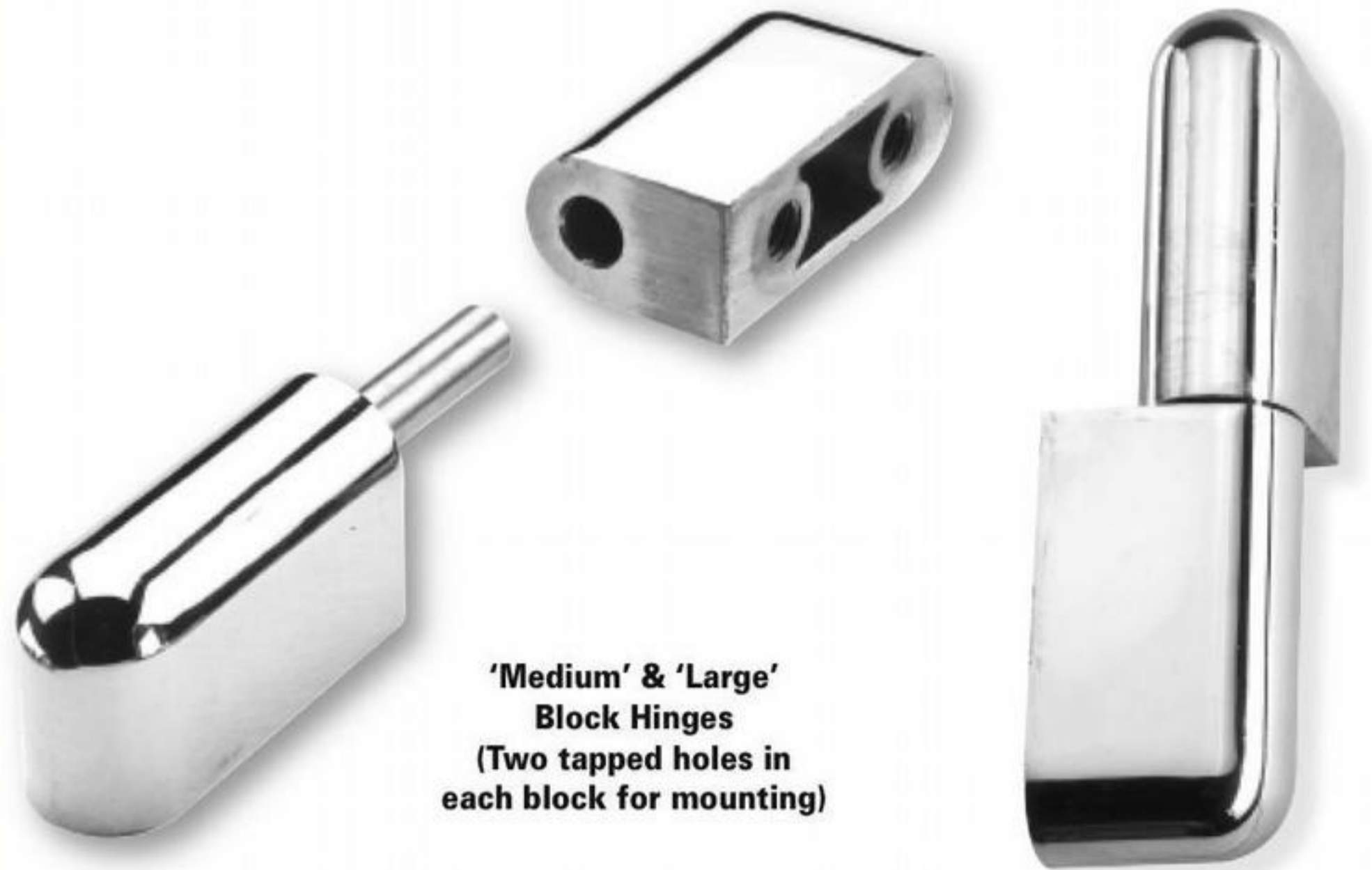




Buy on-line
at the FA Parkes
sales portal
the quickest
and most efficient
way to purchase
all your hardware
requirements; locks
handles, hinges
stays, gasketing
etc....

www.faparkes.co.uk
your one stop shop!



**'Medium' & 'Large'
Block Hinges**
(Two tapped holes in
each block for mounting)

ORDERING CODE

'Medium' (76 mm) hinges (2 holes)

1/26750 raw finish

1/26915 chrome finish

1/26915B black finish

'Large' (100 mm) hinges (2 holes)

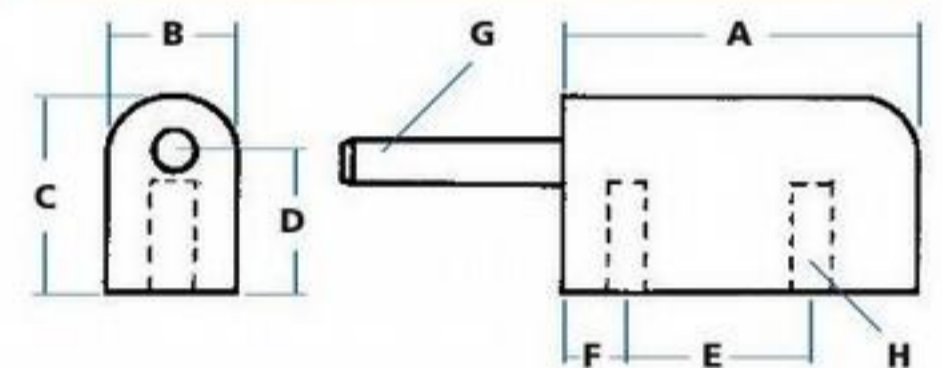
9/00838 raw finish

9/00839 chrome finish

9/00840 black finish

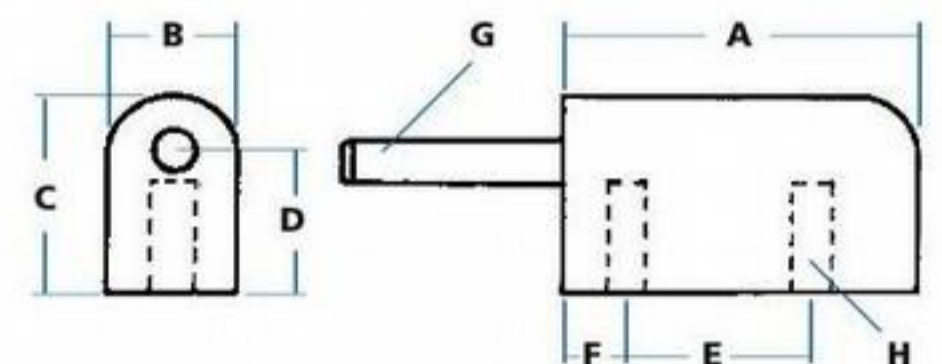
Note: Add 'SS' to order code to specify stainless pin on 76 mm models.

SPECIFICATION



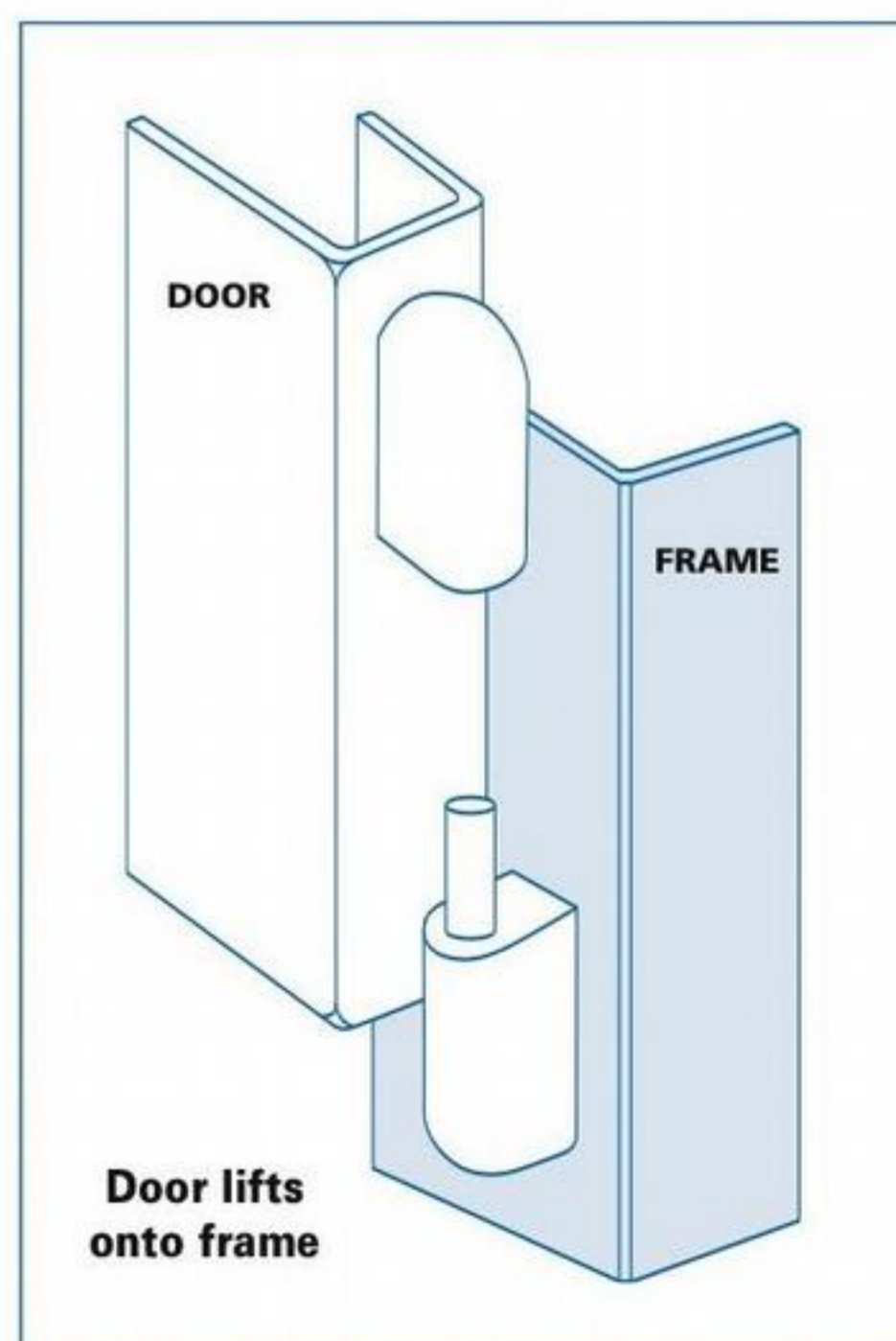
'Medium' (76mm) hinges

A Length (half)	38 mm
B Width	17 mm
C Height	19 mm
D Height to pin	11 mm
E Location	19 mm
F Location	9 mm
G Pin diameter	6 mm
H Hole size	M6 x 7.5 mm



'Large' (100mm) hinges

A Length (half)	50 mm
B Width	19 mm
C Height	28 mm
D Height to pin	19 mm
E Location	25 mm
F Location	13 mm
G Pin diameter	8 mm
H Hole size	M8 x 13 mm



F.A. Parkes (M.B.F) Limited
Unit 4, Acorn Court
Butts Street, Leigh
Lancashire WN7 3AE

Tel. 01942 681 996
sales@faparkes.co.uk